

IQSC Schoolhouse



Introducing Andover Fabrics new collection:
**Schoolhouse from the
International Quilt Study Center**

Quilt designed by
Jean Ann Wright
Quilt size: 56" x 56"



makower uk

1384 Broadway
New York, NY 10018
(800) 223-5678

www.andoverfabrics.com



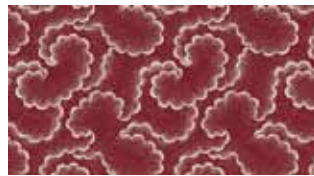
IQSC Schoolhouse

Introducing *Andover Fabrics* new collection:
Schoolhouse from the International Quilt Study Center

Fabrics shown are
25% of actual size.
All fabrics are used in
quilt pattern



5066-R 1¼ yards



5067-R ⅝ yard



5068-R ¼ yard



Itsy Bits 4064-R ¾ yard
(includes binding)



5069-R ½ yard
(plus ¾ yards for backing)



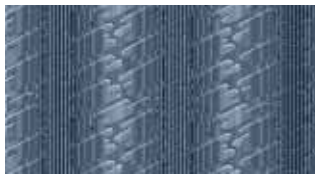
5072-R ¼ yard



5073-R ⅜ yard



Backgrounds 3419-L 1⅜ yards



5066-B



5067-B



5068-B



Itsy Bits 4071-B



5070-B



5071-B



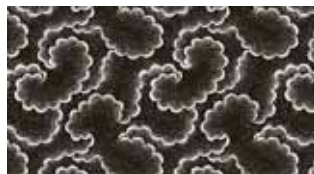
5073-B



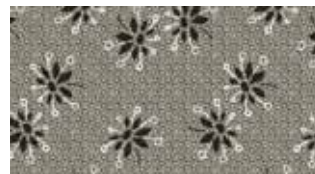
Backgrounds 3419-L



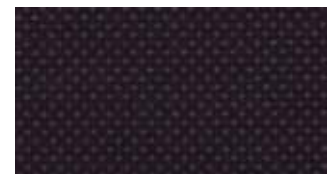
5066-K



5067-K



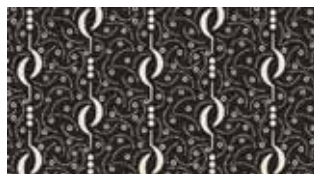
5069-K



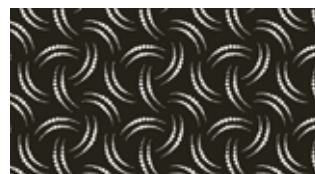
Itsy Bits 4268-K



5070-K



5071-K



5072-K



Backgrounds 3419-L

Red Quilt	Blue Quilt	Black Quilt	10 kits	20 kits	30 kits	Red Quilt	Blue Quilt	Black Quilt	10 kits	20 kits	30 kits
5066-R	5066-B	5066-K	1	2	3	5072-R	5070-B	5070-K	1	1	1
3419-L	3419-L	3419-L	1	2	3	5068-R	5071-B	5071-K	1	1	1
4064-R	4071-B	4268-K	1	1	2	Backing Fabric*					
5067-R	5067-B	5067-K	1	1	2	5069-R	5068-B	5069-K	3	4	8
5073-R	5073-B	5072-K	1	1	1	*Yardage needed for backing (¾ yards per kit)					
5069-R	5068-B	5069-K	1	1	1						